

WEST KNOXVILLE AUCTIONS

THURSDAY • JULY 30TH • 2:30 PM

JUBILEE FARMS • 67 ACRES DIVIDED INTO 9 TRACTS



**OWNER
MUST SELL!**

3208 LOBETTI ROAD

Open House:
Sundays
July 19 and 26
1:00-4:00 PM

30,000 Sq. Ft. Luxury Home on 12.66 Acres!

• 30,000 Sq. Ft. • 2 Elevators • Fabulous Outside Patio with Waterfall, Ideal for Entertaining • 5 Car Garage + RV Garage



Horse Stables + Living Quarters



Living Quarters



Horse Stables



Pavilion



Two-level Hay Barns



Investment House

Slyman AUCTION

865-862-6161

SlymanAuction.com

James Slyman Auctioneer

Lic. 1216



**WILL
SACRIFICE AT
LOWER PRICE!**

Sale 1: Huge Luxury Home on 12.66 Acres

Magnificent setting! All brick home with 17 bedrooms including a 2 bedroom apartment. 11 full & 4 half baths. Custom designed, vaulted great room, massive stone fireplace & floor to ceiling windows. Sunroom, 2 commercial kitchens. Dining room opens to family room. Master bedroom on main with adjoining office.

Possible uses include senior/assisted living, corporate retreat, therapeutic facility, handicap/special needs facility.

- 30,000 Sq. Ft.
- 2 Elevators
- Fabulous Outside Patio with Waterfall, Ideal for Entertaining
- 5 Car Garage + RV Garage



Sale 2 / Tract 2: 5.05 Acres

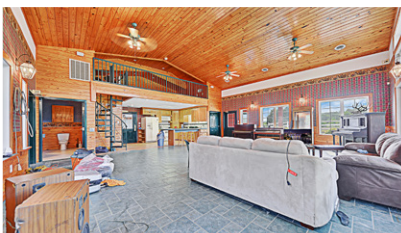
- 1,094' on Lobetti Road
- Zoned Agriculture
- Perfect Fit for Five 1 Acre House Sites!!

Pick up large map in mail box at auction site.

Important: We will conduct entire auction at the pavilion (Sale 4 / Tract 4). Social distancing will be honored and masks provided.

Sale 3 / Tract 3: 9.73 Acres

- 5 Horse Stables and Living Quarters with Fenced Riding Rink and Playground
- Bonus: Equipment Building and Chicken Building



Sale 4 / Tract 4: 9.83 Acres

Beautiful and spacious pavilion and two ponds (fully stocked)

- Land Lays Almost Completely Level
- Professional Pole Lighting
- Pavilion Has a Large Fireplace and Two Outdoor Restrooms
- Parking for 50+ Cars
- The Ponds are Connected with Handicap Bridge - a Canoe Can Pass Under the Bridge!



Important: We will conduct entire auction at the pavilion (Sale 4 / Tract 4).

Sale 5 / Tract 5: 7.76 Acres

This tract is almost 100% in grass with a very slight elevation from bottom to top. Great potential for a development of homes with zoning change from agriculture to planned residential.

Sale 6 / Tract 6: Investment House on 5.16 Acres

7517 Ball Camp Pike

One level home with full basement has 1,950 Sq. Ft. including 5 bedrooms, 2 full baths and 2 half baths. Outside 2 car garage. Tenant has been paying \$900/month for 10 years! Lots of potential for rehab or rent it for more! Over 536' on Ball Camp Pike!



Original farm home (650 Sq. Ft. building) + 2 Metal two-level hay barns with horse stalls, concrete floors, water and restroom



Livestock building



2 Car Garage

Sale 7 / Tract 7: 5.85 Acres

- 438' on Ball Camp Pike
- Partially Fenced

Terms:

Sale 1: 5% deposit day of sale, closing in 30 days.
10% buyer's premium added to final bid.

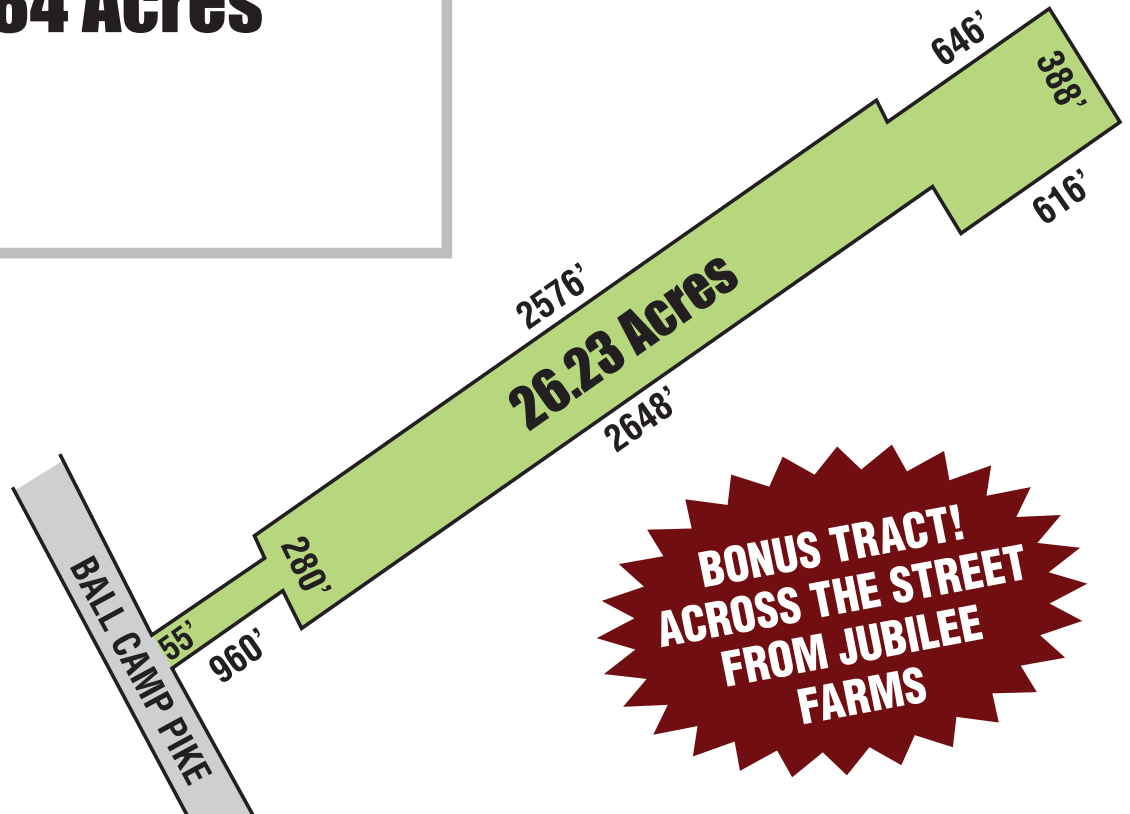
Sales 2-10: 10% deposit day of sale, closing in 30 days.
10% buyer's premium added to final bid.

Sale 8 / Tract 8: 6.84 Acres

- Wooded Campgrounds
- Creek
- 53' on Ball Camp Pike

Sale 10: 26.23 Acres

- Wooded and Rolling Tract
- 55' Frontage on Ball Camp Pike
Expands to 280' after 960'
- Rectangle Shaped Parcel



30,000 Sq. Ft. Luxury Home on 12.66 Acres



Pavilion + 2 Ponds



Original Farm Home + 2 Metal Two-Level Hay Barns

Directions to Auction Site:

From Intersection of Lovell Road/Middlebrook Pike/Ball Camp Pike: go East on Ball Road, then bear right onto Ball Camp Pike, Lobetti Road on Left. From Oak Ridge Hwy: turn onto Ball Road or Ball Camp Pike, follow signs to auction.

SEE SLYMANAUCTION.COM FOR ADDITIONAL DETAILS & PHOTOS!

Slyman AUCTION

865-862-6161

SlymanAuction.com

James Slyman Auctioneer

Lic. 1216